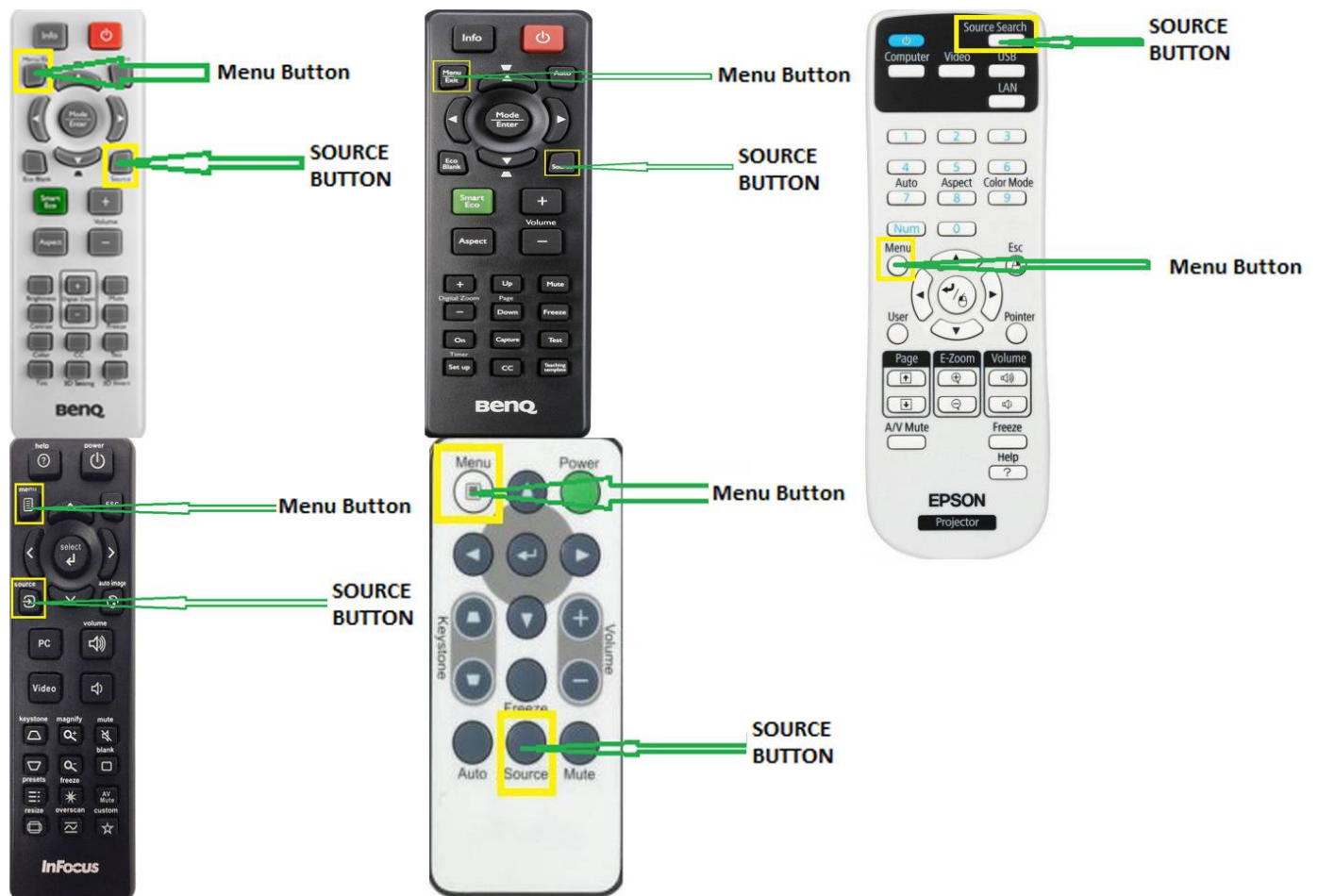


# HOW TO MIRROR/PEER IPAD TO APPLE TV

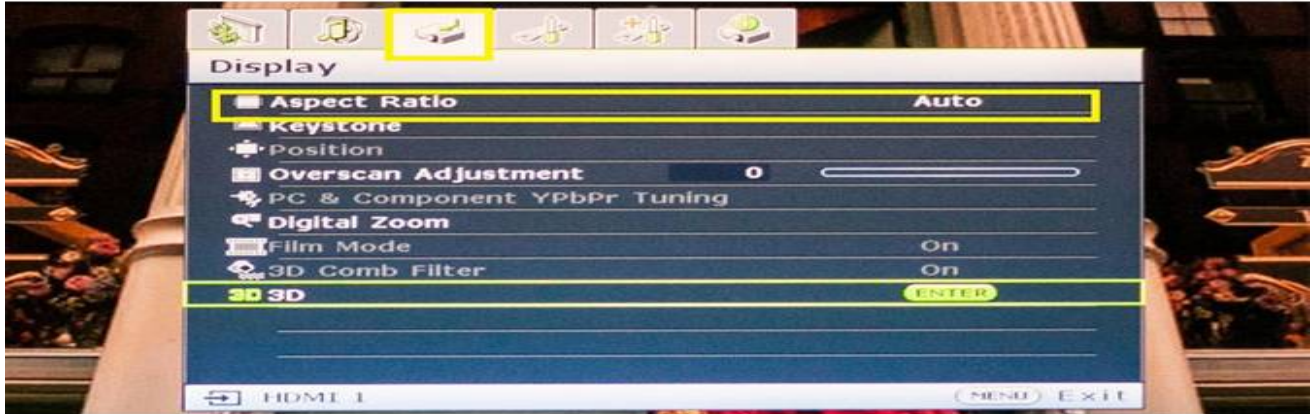
1. Turn On **Wifi** and **Bluetooth** on your IPAD

2. Change projector's source (“**Source Button**” on projector's remote ) input to HDMI to view apple tv. Some projector have two HDMI Port, so just select either HDMI 1 or HDMI 2, but mostly it is connected to HDMI 1.



3. Change display if projector's display is small [“**Menu Button**” (on projector's remote)→**Display** → **Aspect Ratio** ]. Select the display size that suits you best. **Projector settings will vary on projector model seen on image below.**

### BENO PROJECTOR

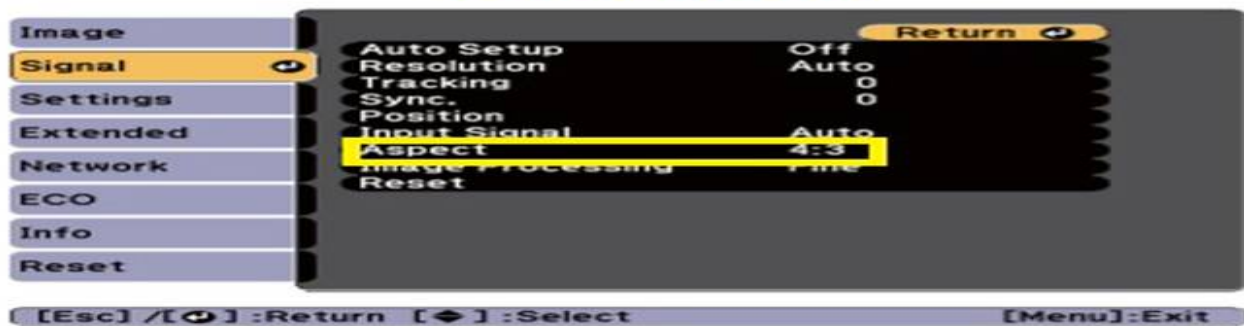


### VIVITEK PROJECTOR

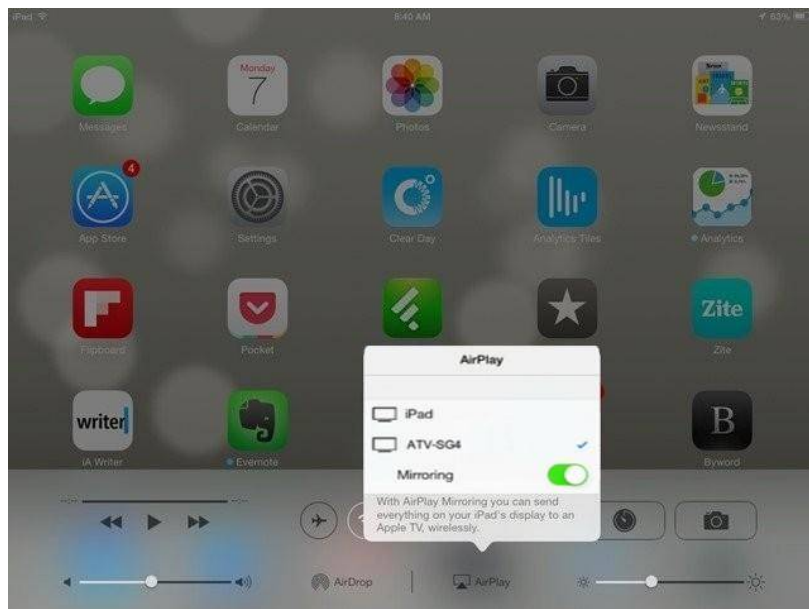
Press the **MENU** button. Press the cursor ◀▶ button to navigate to Installation I.



### EPSON PROJECTOR



4. On your IPAD go to Airplay, locate the name of apple tv you want to use (eg: ATV-SG4)



5. After selecting the device, input the code that will appear. ( Sometimes it will take 5-10 sec to peer the devices.)

